



SEIKOH GIKEN

POLISHING, CLEANING & INSPECTION SOLUTIONS



- Polishing Machines
- Inspection Machines
- Polishing Holders
- Polishing Accessories
- End Face Cleaners



Polishing Machines

● Seikoh Giken's polishing lineups provide high volume assemblers with an ultra ruggedized polisher for 24/7/365 operation. Mechanical durability, low operational costs and reduced maintenance requirements offer near zero downtime for maximum return on investment.

Japanese Pat. No.2133258 / 302763 U.S.Pat. No.4,979,334 / 5,351445 / 6,165,055

SFP-560A2/A2C

- Open workspace design offers creative handling solutions for Multi-Fiber, large O.D. cables
- IPC mode: Independent Pressure Control - High Capacity, Mega-Axis Single-Fiber polishing
- Dynamic Pressure Control (Pat. Pending)
- Pneumatic, Pressurized Turntable pressurize from the bottom to the top for Multi-Fiber, Arrays, Waveguides
- Multi-fiber ferrule epoxy removal can be done by SFP-560A2; performs MT polishing similar simplicity to standard single fiber polishing
- Process programmable (up to 60 processes)
- Data Transfer via USB Interface
- Backwards Compatible with SFP-550 Legacy holders
- Suitable for cellular manufacturing system
- Small Quantity polishing even from 1 piece
- Scanner option available (P/N: FP-SCN56-A)



SFP-560A2
Programmable Pneumatic
Active Pressure



SFP-560A2C
Auto Clamping
Programmable Pneumatic
Active Pressure

New Technology
DPC
Dynamic Pressure Control
(Patent Pending)

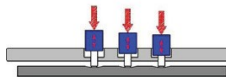


SFP-550E3



- Variable revolution speed (70rpm to 200rpm)
- Multi timer on the Touch Panel (4 timers)
- Programmable polishing process (8 steps each x 12 processes)
- By adding Center Pressure Module, the machine can be converted to advanced multi fiber polisher.
- Pressure source: controlled distance / IPC

IPC
Independent Pressure Control

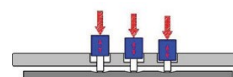


SFP-550C



- Basic model for mass production use
- Compatible with existing SFP-550 holders
- Polishes up to 54 connectors
- No variability in result when polishing 1 or 54 connectors
- Efficient and fast processes for all connector types.
- Pressure source: controlled distance / IPC

IPC
Independent Pressure Control



OFL-15A



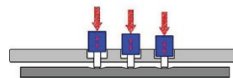
- High performance polishing
- Polishing capacity (max.) : 24
- Programmable polishing process (5 steps each x 15 processes)
- Pressure Source: Motor driven pressure arm with load-cell sensor

SFP-70D



- High performance polishing
- Polishes up to 6 connectors
- Ergonomic, simple design for ease of use
- AC or DC power for field use
- Short cycle time (2 min typical for rework)
- High portability
- Hard shell carrying case for easy and safe transport
- Pressure source: Controlled distance / IPC

IPC
Independent Pressure Control

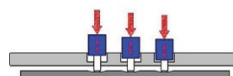


SFP-70D2



- High performance polishing
- Polishes up to 2 connectors
- Ergonomic, simple design for ease of use
- Suitable for light production environments like field termination and laboratory use
- Short cycle time (2 min typical for rework)
- Pressure source: Controlled distance / IPC / Holder weight

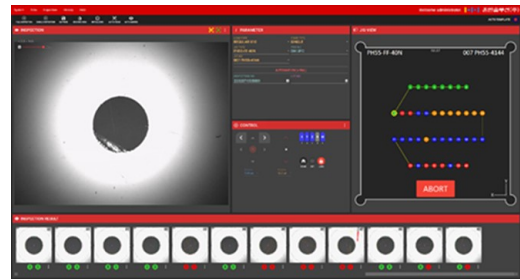
IPC
Independent Pressure Control



Inspection Machines



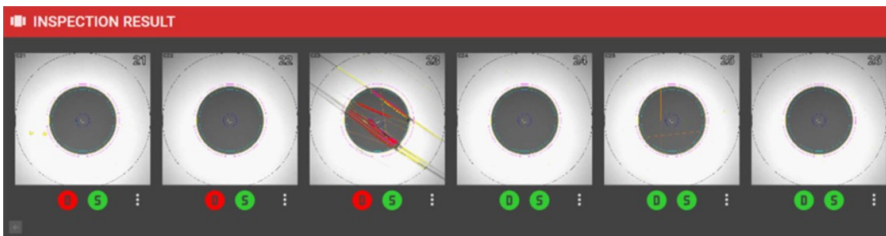
FAIS



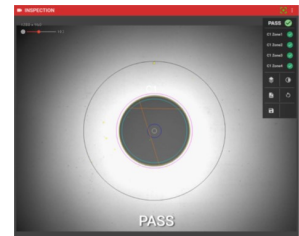
SOFTWARE

FIBER AUTO INSPECTION SYSTEM (FAIS)

- Automated Inspection System
- Inspection of the polished passive elements while they are mounted on the polishing holder
- Fast and constant inspection
- 4 types of automation
 - Auto-Position
 - Auto-Center
 - Auto-Focus
 - Auto-Inspection
- Intuitive PASS/FAIL Result
- Inspection Profile according to IEC
- Central data management for an advanced production quality control
 - Reporting, Statistics
- Barcode scanning for automation

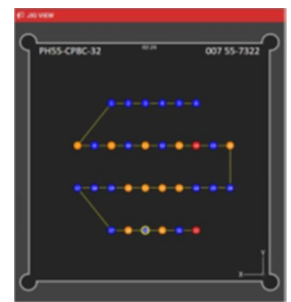
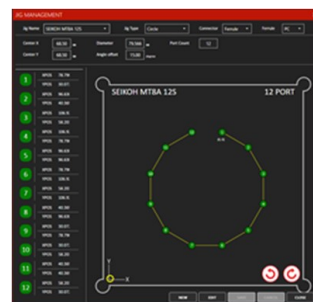
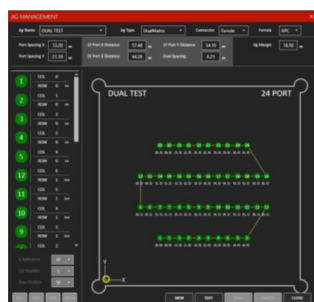
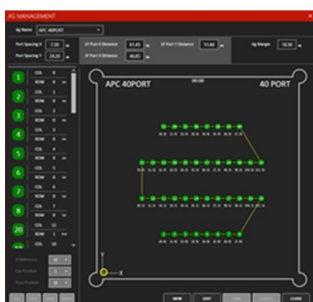


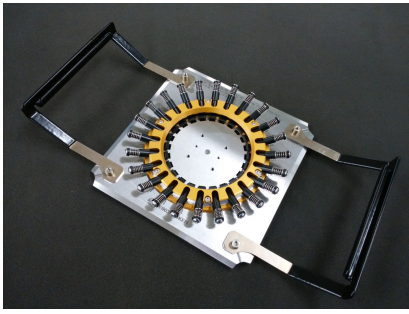
INSPECTION RESULT



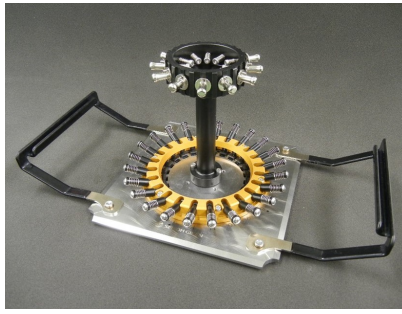
PASS / FAIL

- Auto-Position and Auto-Inspection
- Auto focus per port
- Positioning calibration per type of the polishing holder
- Support for all types of polishing holders
- Less than 6 seconds per port - Positioning, focusing, inspection and result

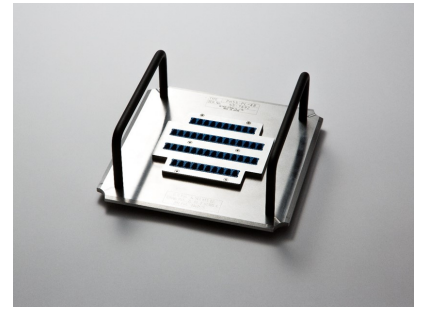




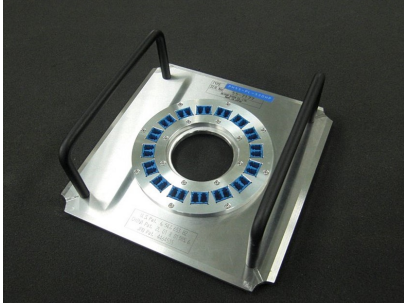
MT/PC One-lever Holder
PH55-MT-24SQ1-B



MT/PC One-lever Holder and Cable Man.
PH55-MT-24SQ1-B and MT-P-CMH-D



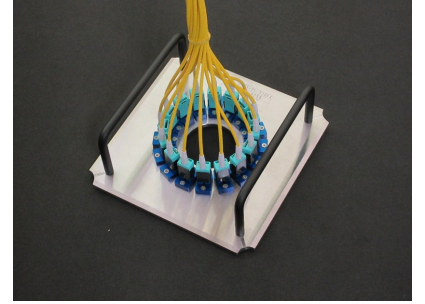
LC/PC Holder
PH55-PL-48



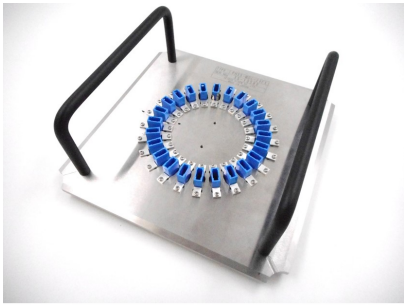
LC/PC Duplex Holder
PH55-PL-32DHP



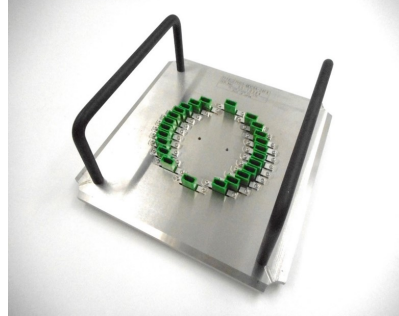
LC/PC Duplex Holder
PH55-PL-48DHP



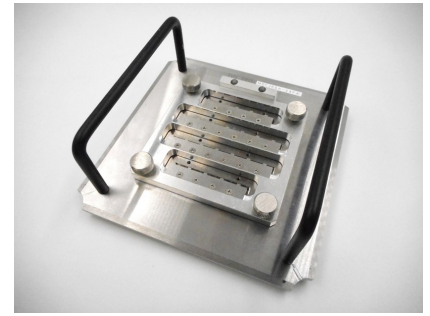
LC/PC Duplex Fix Holder
PH55-PL-32DFX



MDC/PC and MDC/PC Fix Holder
PH55-MDC-24 and PH55-MDC-24FX



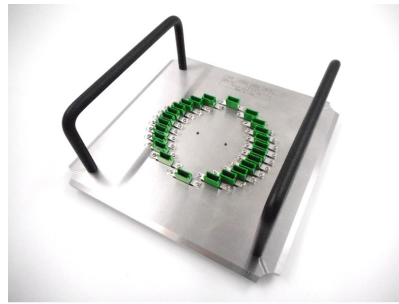
MDC/APC and MDC/APC Fix Holder
PH55-MDC8A-24 and PH55-MDC8A-24FX



MDCJR/APC and MDCJR/APC Fix Holder
PH55-MDCJR8A-24 and PH55-MDCJR8A-24FX



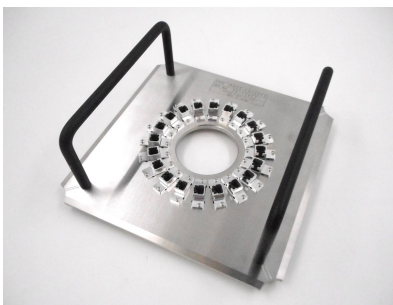
MDCJR/PC and MDCJR/PC Fix Holder
PH55-MDCJR-24 and PH55-MDCJR-24FX



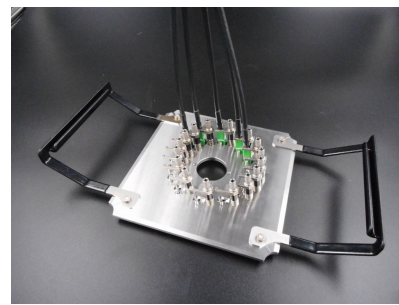
SN/APC and SN/APC Fix Holder
PH55-SN8A-24 and PH55-SN8A-24FX



SN/PC and SN/PC Fix Holder
PH55-SN-24 and PH55-SN-24FX



CS/PC IPC and CS/PC Fix Holder
PH55-CS-20 and PH55-CS-20FX

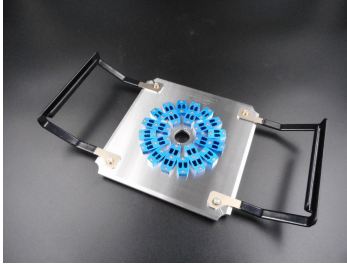


Conical SC/APC Fix Holder
PH55-CP8C-16FX

and many
more...

Polishing Accessories

Wide Holder Handle

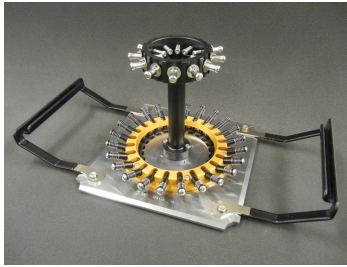


- More convenient handling
- Wide handles are standard with Universal, MT and Mega Axis Holder (32, 40,48 axis)
- Wide handles are required for Washing Stations

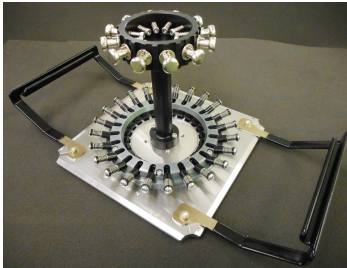
MT-P-WH-55-B

WIDE HANDLE, ECONOMY TYPE FOR PH55 SERIES HOLDERS

Cable Management

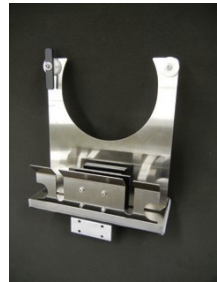


- Allows easy operation
- Provides a stable fiber polishing
- Custom designs available



IPC-P-CMH-SCA18	FOR PH55-CP8C / CP8A -18
IPC-P-CMH-SCA32	FOR PH55-CP8C / CP8A -32 (FOR D2mm to D3mm cable)
IPC-P-CMH-SCA32-D5	FOR PH55-CP8C / CP8A -32 (FOR D4mm to D5mm cable)
IPC-P-CMH-LC24	FOR PH55-PL-24 FOR SINGLE BOOT
IPC-P-CMH-LC32DHP	FOR PH55-PL-32DHP FOR BOTH SINGLE AND UNIBOOT
IPC-P-CMH-LC48HP-U	FOR PH55-PL-48 FOR UNIBOOT
IPC-P-CMH-LC48DHP-U	FOR PH55-PL-48DHP FOR UNIBOOT
IPC-P-CMH-LC48HP-S	FOR PH55-PL-48 FOR SINGLE BOOT
IPC-P-CMH-LCA32-U	FOR PH55-PL8A-32DHP-POR FOR UNIBOOT
PRM-P-CMH-A	FOR SINGLE BODY MT HOLDER (SCREW LOCK TYPE) (2mm to 4mm Jacket)
PRM-P-CMH-B	FOR SINGLE BODY MT HOLDER (SRPING LOCK TYPE) (2mm to 4mm Jacket)
PRM-P-CMH-C	FOR SINGLE BODY MT HOLDER (SCREW LOCK FOR FEEDER CABLE 4MM TO 8MM)
PRM-P-CMH-D	FOR SINGLE BODY MT HOLDER (SCREW LOCK FOR FEEDER CABLE 5mm TO 13mm), 12-axis
MT-P-CMH56-A	FOR SFP-560A (SPRING LOCK TYPE 2mm to 4mm Jacket) 12/24-axis
MT-P-CMH56-B	FOR SFP-560A (SCREW LOCK FOR FEEDER CABLE 4MM TO 8MM) 12/24-axis
MT-P-CMH56-D	FOR SFP-560A SLIM AND TALL (SPRING LOCK TYPE 2mm to 4mm Jacket) 12/24-axis
MT-P-CMH56-E	FOR SINGLE BODY MT HOLDER (SCREW LOCK FOR FEEDER CABLE 5mm TO 13mm), 12-axis

Washing Station



- New metal design for enhanced durability
- Improved handling of SFP series polishing holders
- Keeps polisher safe from excessive water; equipped with drain tube

MT-P-WSH56-C

METAL WASHING STATION (560A2)

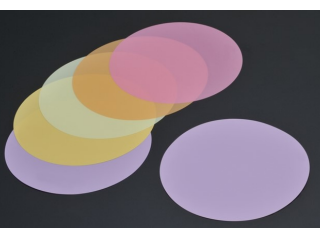


Polishing Pad



- Tightly controlled thickness and flatness
- Precision controlled hardness

Polishing Film



- Scratch free polishing
- Easy cleaning using only purified water
- Designed to provide GR-326 endface geometry

End Face Cleaners

End face Cleaner SPR-3 (FerrulePro™) for mass production sites



- Excellent for **Multi Fiber ferrule/connector** cleaning
- Unique forward-reverse motion for double action
- Wet-Dry combination
- Excellent cleaning yield of MT Ferrule thanks to the double motion and wet-dry combination
- Less than 3.0 s **Multi Fiber ferrule/connector** cleaning cycle
- LED lighting for better visibility during operation
- Compatibility with existing chucks and cleaning cassette SPR-10K



SPR-3

AUTOMATIC DESKTOP CLEANER, WITH 1PCE CASSETTE, SOLVENT, PUMP DISPENSER & 4PCS HOLDERS (-H8,- H25, -H26, -H27)

End face Cleaner SPR-2 (FerrulePro™) for mass production sites



- Excellent for **Single Fiber ferrule/connector** cleaning
- **1.5 s** connector cleaning time
- Efficient, quick, consistent cleaning results
- No training required
- Lint free cleaning paper
- SC, FC, ST, LC, MU connector and ferrule cleaning

SPR-2

AUTOMATIC DESKTOP CLEANER, WITH 1PCE CASSETTE & 4PCS HOLDERS (H1, H3L, H4 & H6)

End Face Cleaners

SHM-502 (HandiMate)



- Automatic “Clean and Advance” tape technology
- Excellent cleaning tool for field technicians
- Duplex connector cleaning in one simple operation
- Disposable with **over 500 times** cleaning with use of **specialized cleaning paper**
- Supports both **PC and Angled PC** endface designs
- Applicable Connectors:
 - Duplex LC/PC (Standard Pitch 6.25 and Narrow Pitch 5.25mm)
 - Duplex MU/PC (Standard Pitch width 4.5mm)

handi
mate

HandiMate	SHM-502	Ferrule Cleaner
-----------	---------	-----------------

SHM-503 (HandiMate)



- Automatic “Clean and Advance” tape technology
- **More than 500 times cleaning** with use of **synthetic cleaning cloth** to improve a durability
- Supports both **PC and Angled PC** endface designs
- Handy palm sized unit
- Works with both Simplex and Duplex applications
- Applicable Connectors:
 - Simplex SC, FC, ST, LC and MU (For PC and APC)
 - Duplex LC/PC (Standard Pitch 6.25 and Narrow Pitch 5.25mm)
 - Duplex MU/PC (Standard Pitch width 4.5mm)

handi
mate

HandiMate	SHM-503	Ferrule Cleaner (synthetic cloth)
-----------	---------	-----------------------------------

End Face Cleaners

SFM 2.0-250/125/MPO (FerruleMate)



- Patented 360 degree Rotational Tip for extra wide cleaning
- Easy **one-push** operation
- Highly effective cleaning via non-woven micro fiber
- Lint free and zero static
- More than 800 cleanings per unit
- Meets and exceeds all current fiber cleaning standards

ferrule mate 2.0

FERRULE MATE 2.0	SFM2.0-250	FERRULE MATE 2.0 FOR 2,5mm
	SFM2.0-125	FERRULE MATE 2.0 FOR 1,25mm
	SFM2.0-MPO	FERRULE MATE 2.0 FOR MPO



SFM 2.0 - MPO

500+ cleaning

MPO
(PC and Angled PC)



SFM 2.0 - 250

800+ cleaning

SC / FC / ST 2.5mm
(PC & Angled PC)

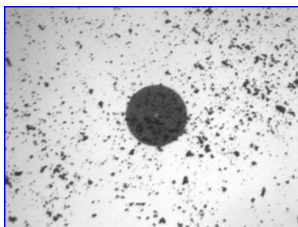


SFM 2.0 - 125

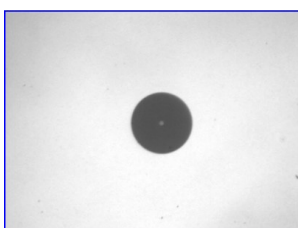
800+ cleaning

LC / MU 1.25mm
(PC & Angled PC)

Dust

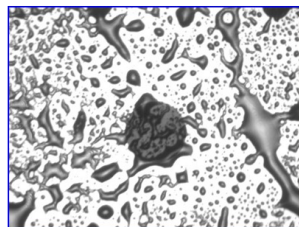


Before cleaning

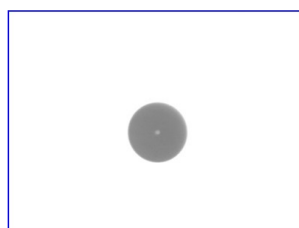


After cleaning

Skin oil

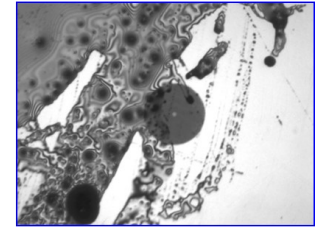


Before cleaning

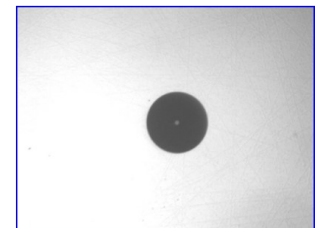


After cleaning

Dust + Salad oil



Before cleaning



After cleaning

Polishing Holders & Ordering Numbers



Polishing Holders for SFP-550 / SFP-560A (IPC)

FERRULE	PH55-FF-20	2.5MM FERRULE PC, 20 AXIS
	PH55-FF-24	2.5MM FERRULE PC, 24 AXIS
	PH55-FF8A-18-1.5	2.5MM FERRULE APC STEP, 18 AXIS, KEY 1.5MM WIDTH
	PH55-FF8A-18-1.3	2.5MM FERRULE APC STEP, 18 AXIS, KEY 1.3MM WIDTH
	PH55-FF8C-18-1.5	2.5MM FERRULE APC CONICAL, 18 AXIS, KEY 1.5MM WIDTH
	PH55-FF8C-18-1.3	2.5MM FERRULE APC CONICAL, 18 AXIS, KEY 1.3MM WIDTH
	PH55-FLM-40	1.25MM FERRULE 40 AXIS
	PH55-FLM-48	1,25 MM FERRULE 48 AXIS
	PH55-FF-40	2.5 MM FERRULE 40 AXIS
	PH55-FF-48	2.5 MM FERRULE 48 AXIS
	PH55-FF8A-40-1.3	2.5 MM APC STEP FERRULE 40 AXIS, KEY 1.3MM
	PH55-FF8C-40-1.3	2.5 MM APC CONICAL FERRULE 40 AXIS KEY, 1.3MM
	PH55-FF8A-40-1.5	2.5 MM APC STEP FERRULE 40 AXIS, KEY 1.5MM
	PH55-FF8C-40-1.5	2.5 MM APC CONICAL FERRULE 40 AXIS, KEY 1.5MM
	PH55-FF8A-52-1.3	2.5 MM APC STEP FERRULE 52 AXIS, KEY 1.3MM
	PH55-FF8C-52-1.3	2.5 MM APC CONICAL FERRULE 52 AXIS KEY, 1.3MM
	PH55-FF8A-52-1.5	2.5 MM APC STEP FERRULE 52 AXIS, KEY 1.5MM
	PH55-FF8C-52-1.5	2.5 MM APC CONICAL FERRULE 52 AXIS, KEY 1.5MM
	PH55-FLM-16	1.25MM FERRULE, 16 AXIS
	FC	PH55-FP-20
PH55-FP-24		FC/PC, 24 AXIS
PH55-FP8R-18-I		FC/APC STEP, 18 AXIS NARROW KEY 2MM WIDTH
PH55-FP8N-18-I		FC/APC STEP, 18 AXIS WIDE KEY 2.14MM WIDTH
PH55-FP8RC-18		FC/APC CONICAL, 18 AXIS NARROW KEY 2MM WIDTH
PH55-FP8NC-18		FC/APC CONICAL, 18 AXIS WIDE KEY 2.14MM WIDTH
PH55-FP8R-24		FC/APC STEP, 24 AXIS NARROW KEY 2MM WIDTH
PH55-FP8N-24		FC/APC STEP, 24 AXIS WIDE KEY 2.14MM WIDTH
PH55-FP8RC-24		FC/APC CONICAL, 24 AXIS NARROW KEY 2MM WIDTH
PH55-FP8NC-24		FC/APC CONICAL, 24 AXIS WIDE KEY 2.14MM WIDTH
ST	PH55-SP-20	ST/PC, 20 AXIS
	PH55-SP-24	ST/PC, 24 AXIS
	PH55-SP-28	ST/PC 28 AXIS
SC	PH55-CP-20	SC/PC, 20 AXIS
	PH55-CP-24	SC/PC, 24 AXIS
	PH55-CP8A-18	SC/APC STEP, 18 AXIS
	PH55-CP8C-18	SC/APC CONICAL, 18 AXIS
	PH55-CP8A-24	SC/APC STEP, 24 AXIS
	PH55-CP8C-24	SC/APC CONICAL, 24 AXIS
	PH55-CP-32	SC/PC 32 AXIS
	PH55-CP8A-32	SC/APC STEP 32 AXIS
	PH55-CP8C-32	SC/APC CONICAL 32 AXIS

E2000 FERRULE	PH55-EF-18-HS	E2000/PC FOR H+S FERRULE, SNAP-IN TYPE
	PH55-EF-18-RS	E2000/PC FOR R&M FERRULE SNAP-IN TYPE
	PH55-EF8A-18-H	E2000/APC FOR H+S FERRULE SNAP-IN TYPE
	PH55-EF8A-18-R	E2000/APC FOR R&M FERRULE SNAP-IN TYPE
	PH55-EF-24-H	E2000/PC 24 AXIS FOR H&S SNAP-IN TYPE
	PH55-EF-24-R	E2000/PC 24 AXIS FOR R&M SNAP-IN TYPE
	PH55-EF8A-24-H	E2000/APC 24 AXIS FOR H&S SNAP-IN TYPE
	PH55-EF8A-24-R	E2000/APC 24 AXIS FOR R&M SNAP-IN TYPE
	PH55-EF-40-H	E2000/PC 40 AXIS FOR H&S SNAP-IN TYPE
	PH55-EF-40-R	E2000/PC 40 AXIS FOR R&M SNAP-IN TYPE
	PH55-EF8A-40-H	E2000/APC 40 AXIS FOR H&S SNAP-IN TYPE
	PH55-EF8A-40-R	E2000/APC 40 AXIS FOR R&M SNAP-IN TYPE
E2000 PLUG	PH55-EP-12I	E2000/PC PLUG, 12 AXIS, IPC
	PH55-EP-20I	E2000/PC PLUG, 20 AXIS, IPC
	PH55-EP8A-12I	E2000/APC plug type holder IPC type, 12-axis
	PH55-EP8A-20I	E2000/APC plug type holder IPC type, 20-axis
LEMO F2	PH55-F0332-800	LEMO F2, COUPLING NUT TYPE, 24-AXIS
	PH55-F0415-440B	SMPTE D9,2mm CABLE with LEMO F2 / F2Y, REMOVABLE MAGNETIC IPC POST, 16-AXIS, WITH CABLE MANAGEMENT
ELIO	PH55-F0391-140	IPC Polishing holder for ELIO/PC, 20-axis, Coupling nut type
LC	PH55-PL-24	LC/PC, 24 AXIS
	PH55-PL-24HP	LC/PC, 24 AXIS, HIGH PRESSURE TYPE,
	PH55-PL-32DHP	LC/PC, 32 AXIS, SIMPLEX AND DUPLEX, HIGH PRESSURE TYPE
	PH55-PL8A-20-B	LC/APC, 20 AXIS
	PH55-PL8A-20HP-B	LC/APC, 20 AXIS HIGH PRESSURE TYPE,
	PH55-PL8A-24	LC/APC, 24 AXIS
	PH55-PL8A-24HP	LC/APC, 24 AXIS, HIGH PLESSURE TYPE,
	PH55-PL8A-32DHP-POR	LC/APC, 32 AXIS, FOR DUPLEX WITH POLARITY ROTATE, HIGH PRE. TYPE
	PH55-PL-48DHP	LC/PC 48 AXIS, HIGH PRESSURE TYPE, SIMPLEX & DUPLEX
	PH55-PL8A-48HP	LC/APC 48 AXIS, HIGH PRESSURE TYPE
	PH55-PL-54DHP	LC/PC 54 AXIS, HIGH PRESSURE TYPE, SIMPLEX & DUPLEX
PH55-PL8A-54HP	LC/APC 54 AXIS, HIGH PRESSURE TYPE (NEW)	
MU	PH55-PM-24	MU/PC, 24 AXIS
	PH55-PM8A-20	MU/APC, 20 AXIS
	PH55-PM-40	MU/PC 40 AXIS
SMA	PH55-M5P-20	SMA905/PC, 20 AXIS
CS SN Ferrule	PH55-F0420-900B	CS and SN ferrule, 64-ferrules (32 two-fiber-cables), Plate spring type IPC, with CMH, Circular layout
	PH55-F0423-700	SN, CS, IP-16, BTW / PC ferrule, Plate spring IPC, with CMH, Circular layout
	PH55-F0423-930	CS and SN / APC ferrule, 24-ferrules (6 ferrules per side x 4 sides), Plate spring type IPC, with CMH, Circular layout
	PH55-F0423-940	CS and SN / APC ferrule, 48-ferrules (12 ferrules per side x 4 sides), Plate spring type IPC, with CMH, Circular layout
MDC Ferrule	PH55-F0423-740	MDC ferrule, 48-ferrules, Plate spring type IPC, with CMH, Circular layout
CS	PH55-CS-20	CS/PC plug, 20-plugs (40 ferrules), Snap-in type IPC, Circular layout
	PH55-CS8A-18	CS/APC plug, '18-plugs (36 ferrules), Snap-in type IPC, Circular layout
SN	PH55-SN-24	SN plug, 24-plugs (48 ferrules), Snap-in type IPC, Circular layout
	PH55-SN8A-24	SN/APC plug, 24-plugs (48 ferrules), Snap-in type IPC, Circular layout
SN-JR	PH55-SNJR-12	SN-JR / PC plug, '12-plugs (24 ferrules), Snap-in type IPC, Metal adapter, Circular layout
	PH55-SNJR-24	SN-JR / PC plug, '24-plugs (48 ferrules), Snap-in type IPC, Metal adapter, Circular layout
	PH55-SNJR8A-12	SN-JR / APC plug, '12-plugs (24 ferrules), Snap-in type IPC, Metal adapter, Circular layout
	PH55-SNJR8A-24	SN-JR / APC plug, '24-plugs (48 ferrules), Snap-in type IPC, Metal adapter, Circular layout
SN COMPACT	PH55-SNCOM-12	SN-COMPACT / PC plug, '12-plugs (24 ferrules), Snap-in type IPC, Metal adapter, Circular layout
	PH55-SNCOM-24	SN-COMPACT / PC plug, '24-plugs (48 ferrules), Snap-in type IPC, Metal adapter, Circular layout
	PH55-SNCOM8A-12	SN-COMPACT / APC plug, '12-plugs (24 ferrules), Snap-in type IPC, Metal adapter, Circular layout
	PH55-SNCOM8A-24	SN-COMPACT / APC plug, '24-plugs (48 ferrules), Snap-in type IPC, Metal adapter, Circular layout
MDC	PH55-MDC-24	MDC plug, 24-plugs (48 ferrules), Snap-in type IPC, Circular layout
	PH55-MDC8A-24	MDC/APC plug, 24-plugs (48 ferrules), Snap-in type IPC, Circular layout
MDC JR	PH55-MDCJR-24	MDC-JR plug, '24-plugs (48 ferrules), Plate spring type IPC, Liner layout
	PH55-MDCJR8A-24	MDC-JR/APC plug, '24-plugs (48 ferrules), Plate spring type IPC, Liner layout

Fixed Polishing Holders for SFP-560A Series (DPC)

SC	PH55-CP-32FX	SC/PC HIGH VOLUME HOLDER, 32 axis
	PH55-CP8C-32FX	SC/APC HIGH VOLUME HOLDER, 32 axis
	PH55-CP-36FX	SC/PC HIGH VOLUME HOLDER, 36 axis
	PH55-CP8C-36FX	SC/APC HIGH VOLUME HOLDER, 36 axis
	PH55-CP-16FX	SC/PC 16 AXIS, Fixed type for Rigid cable
	PH55-CP8C-16FX	SC/APC 16 AXIS, Fixed type for Rigid cable
OPTITAP	PH55-OPTC-18FX	OptiTap, 18-axis, Snap-in type, Circular layout
	PH55-OPT8C-24FX	OptiTap, 24-axis, Snap-in type, Circular layout
E2000 PLUG FOR NEW H+S	PH55-EP-24A	E2000/PC 24 AXIS FOR H&S PLUG TYPE
	PH55-EP8A-24A	E2000/APC 24 AXIS FOR H&S PLUG TYPE
LC	PH55-PL-32DFX	LC/PC, 32 AXIS, SIMPLEX AND DUPLEX,
	PH55-PL-48DFX	LC/PC, 48 AXIS, SIMPLEX AND DUPLEX,
	PH55-PL8A-24FX	LC/APC, 24 FIXED DPC type (Simplex only)
	PH55-PL8A-32DFX-POR	LC/APC, 32 AXIS, SIMPLEX AND DUPLEX,
SMA	PH55-M5P-18	SMA905/PC, 18 AXIS
CS SN Ferrule	PH55-F0423-700FX	SN, CS, IP-16, BTW / PC ferrule, Linear slide fixation, with CMH, Circular layout
	PH55-F0423-930FX	CS and SN / APC ferrule, 24-ferrules (6 ferrules per side x 4 sides), Linear-slide fixation, with CMH, Circular layout
	PH55-F0423-940FX	CS and SN / APC ferrule, 48-ferrules (12 ferrules per side x 4 sides), Linear-slide fixation, with CMH, Circular layout
MDC Ferrule	PH55-F0423-740FX	MDC ferrule, 48-ferrules, Linear slide fixation, with CMH, Circular layout
CS	PH55-CS-20FX	CS/PC plug, '20-plugs (40 ferrules), Snap-in type, Circular layout
	PH55-CS8A-18FX	CS/APC plug, '18-plugs (36 ferrules), Snap-in type, Circular layout
SN	PH55-SN-24FX	SN plug, 24-plugs (48 ferrules), Snap-in type, Circular layout
	PH55-SN8A-24FX	SN/APC plug, 24-plugs (48 ferrules), Snap-in type, Circular layout
SN-JR	PH55-SNJR-12FX	SN-JR / PC plug, '12-plugs (24 ferrules), Snap-in type, Metal adapter, Circular layout
	PH55-SNJR-24FX	SN-JR / PC plug, '24-plugs (48 ferrules), Snap-in type, Metal adapter, Circular layout
	PH55-SNJR8A-12FX	SN-JR / APC plug, '12-plugs (24 ferrules), Snap-in type, Metal adapter, Circular layout
	PH55-SNJR8A-24FX	SN-JR / APC plug, '24-plugs (48 ferrules), Snap-in type, Metal adapter, Circular layout
SN COMPACT	PH55-SNCOM-12FX	SN-COMPACT / PC plug, '12-plugs (24 ferrules), Snap-in type, Metal adapter, Circular layout
	PH55-SNCOM-24FX	SN-COMPACT / PC plug, '24-plugs (48 ferrules), Snap-in type, Metal adapter, Circular layout
	PH55-SNCOM8A-12FX	SN-COMPACT / APC plug, '12-plugs (24 ferrules), Snap-in type, Metal adapter, Circular layout
	PH55-SNCOM8A-24FX	SN-COMPACT / APC plug, '24-plugs (48 ferrules), Snap-in type, Metal adapter, Circular layout
MDC	PH55-MDC-24FX	MDC plug, 24-plugs (48 ferrules), Snap-in type, Circular layout
	PH55-MDC8A-24FX	MDC/APC plug, 24-plugs (48 ferrules), Snap-in type, Circular layout
MDC JR	PH55-MDCJR-24FX	MDC-JR plug, '24-plugs (48 ferrules), Linear slide fixation, Linear layout
	PH55-MDCJR8A-24FX	MDC-JR/APC plug, '24-plugs (48 ferrules), Linear slide fixation, Linear layout
Universal Ferrule	PH55-F0423-210	Univ. MIL PC ferrule holder for D1.0 to D2.5mm ferrule, 24-axis
	PH55-F0423-210A	Univ. MIL PC ferrule holder for D1.0 to D2.5mm ferrule, 24-axis, with CMH
	PH55-F0423-210B	Univ. MIL PC ferrule holder for D1.0 to D2.5mm ferrule, 24-axis, with Setting jig
	PH55-F0423-210C	Univ. MIL PC ferrule holder for D1.0 to D2.5mm ferrule, 24-axis, with CMH and Setting jig

MT Holders

POLISHING HOLDER FOR MINI / BIG-MT CURRENT	PH55-MT-12S1	SINGLE BODY MT HOLDER 12-AXIS
	PH55-MT-24S1	SINGLE BODY MT HOLDER 24-AXIS
	PH55-MT8A-12S1	SINGLE BODY MT/APC HOLDER 12-AXIS
	PH55-MT8A-24S1	SINGLE BODY MT/APC HOLDER 24-AXIS
	PH55-MT-12R1	SINGLE BODY REPOLISHING MT/PC HOLDER 12-AXIS including setting disk and ferrule stopper
	PH55-MT8A-12R1	SINGLE BODY REPOLISHING MT/APC HOLDER 12-AXIS including setting disk and ferrule stopper
	PH55-MT-12SQ1-B	ONE LEVER TYPE QUICK LOAD MT/PC HOLDER 12-AXIS (LOCK-DOWN)
	PH55-MT-24SQ1-B	ONE LEVER TYPE QUICK LOAD MT/PC HOLDER 24-AXIS (LOCK-DOWN)
	PH55-MT8A-12SQ1-B	ONE LEVER TYPE QUICK LOAD MT/APC HOLDER 12-AXIS (LOCK-DOWN)
	PH55-MT8A-24SQ1-B	ONE LEVER TYPE QUICK LOAD MT/APC HOLDER 24-AXIS (LOCK-DOWN)

Polishing Holders for SFP-70D

FERRULE	PH07-FF-6	2.5MM FERRULE PC, 6 AXIS
	PH07-FF8A-6-1.5	2.5MM FERRULE APC STEP, 6 AXIS, KEY 1.5MM WIDTH
	PH07-FF8A-6-1.3	2.5MM FERRULE APC STEP, 6 AXIS, KEY 1.3MM WIDTH
	PH07-FF8C-6-1.5	2.5MM FERRULE APC CONICAL, 6 AXIS, KEY 1.5MM WIDTH
	PH07-FF8C-6-1.3	2.5MM FERRULE APC CONICAL, 6 AXIS, KEY 1.3MM WIDTH
FC	PH07-FP-6	FC/PC, 6 AXIS
	PH07-FP8R-6	FC/APC STEP, 6 AXIS NARROW KEY 2MM WIDTH
	PH07-FP8N-6	FC/APC STEP, 6 AXIS WIDE KEY 2.14MM WIDTH
	PH07-FP8RC-6	FC/APC CONICAL, 6 AXIS NARROW KEY 2MM WIDTH
	PH07-FP8NC-6	FC/APC CONICAL, 6 AXIS WIDE KEY 2.14MM WIDTH
ST	PH07-SP-6	ST/PC, 6 AXIS
SC	PH07-CP-6	SC/PC, 6 AXIS
	PH07-CP8A-6	SC/APC STEP, 6 AXIS
	PH07-CP8C-6	SC/APC CONICAL, 6 AXIS
FERRULE	PH07-FLM-6	1.25MM FERRULE PC, 6 AXIS
LC	PH07-PL-6	LC/PC, 6 AXIS
	PH07-PL8A-6	LC/APC, 6 AXIS
MU	PH07-PM-6	MU/PC, 6 AXIS
	PH07-PM8A-6	MU/APC, 6 AXIS
SMA905	PH07-M5P-6	SMA905, 6 AXIS
E2000 FERRULE	PH07-EF-2-H	H&S E2000/PC FERRULE, 2 AXIS
	PH07-EF-2-R	R&M E2000/PC FERRULE, 2 AXIS
	PH07-EF8A-2-H	H&S E2000/APC FERRULE, 2 AXIS
	PH07-EF8A-2-R	R&M E2000/APC FERRULE, 2 AXIS
LEMO F2	PH07-F0188-910	LEMO F2, COUPLING NUT TYPE, 6-AXIS
ELIO	PH07-F0390-30	ELIO/PC IPC polishing holder for SFP-70D, 6-axis
MT	PH07-MT-6T1	MT/PC, 6 AXIS, TORQUE WRENCH TYPE
	PH07-MT8A-6T1	MT/APC, 6 AXIS, TORQUE WRENCH TYPE

Polishing Holders for SFP-70D2

FERRULE	PH072-FF-2	2.5MM FERRULE PC, 2 AXIS
	PH072-FF8A-2-1.5	2.5MM FERRULE APC STEP, 2 AXIS, KEY 1.5MM WIDTH
	PH072-FF8A-2-1.3	2.5MM FERRULE APC STEP, 2 AXIS, KEY 1.3MM WIDTH
	PH072-FF8C-2-1.5	2.5MM FERRULE APC CONICAL, 2 AXIS, KEY 1.5MM WIDTH
	PH072-FF8C-2-1.3	2.5MM FERRULE APC CONICAL, 2 AXIS, KEY 1.3MM WIDTH
FC	PH072-FP-2	FC/PC, 2 AXIS
	PH072-FP8R-2	FC/APC STEP, 2 AXIS NARROW KEY 2MM WIDTH
	PH072-FP8N-2	FC/APC STEP, 2 AXIS WIDE KEY 2.14MM WIDTH
	PH072-FP8RC-2	FC/APC CONICAL, 2 AXIS NARROW KEY 2MM WIDTH
	PH072-FP8NC-2	FC/APC CONICAL, 2 AXIS WIDE KEY 2.14MM WIDTH
ST	PH072-SP-2	ST/PC, 2 AXIS
SC	PH072-CP-2	SC/PC, 2AXIS
	PH072-CP8A-2	SC/APC STEP, 2 AXIS
	PH072-CP8C-2	SC/APC CONICAL, 2 AXIS
FERRULE	PH072-FLM-2	1.25MM FERRULE PC, 2 AXIS
LC	PH072-PL-2	LC/PC, 2 AXIS
	PH072-PL-2DFX	LC/PC Duplex / Uniboot, 2 AXIS (Fixed Type, DPC)
	PH072-PL8A-2	LC/APC, 2 AXIS
MU	PH072-PM-2	MU/PC, 2 AXIS
	PH072-PM8A-2	MU/APC, 2 AXIS
LEMO F2	PH072-F0186-910	LEMO F2, COUPLING NUT TYPE, 2-AXIS
	PH072-F0422-490	SMPTE D9,2mm CABLE with LEMO F2 / F2Y, REMOVABLE MAGNETIC IPC
ELIO	PH072-F0442-440	ELIO/PC IPC polishing holder for SFP-70D2, 2-axis
MT	PH072-MT8A-1	MT/APC 1AXIS
	PH072-MT-1	MT/PC 1AXIS
MT one-lever	PH072-MT8A-1Q	MT/APC 1AXIS, ONE-LEVER ACTION TYPE
	PH072-MT-1Q	MT/PC 1AXIS, ONE-LEVER ACTION TYPE
E2000 FERRULE	PH072-EF-2-H	H&S E2000/PC FERRULE, 2 AXIS
	PH072-EF-2-R	R&M E2000/PC FERRULE, 2 AXIS
	PH072-EF8A-2-H	H&S E2000/APC FERRULE, 2 AXIS
	PH072-EF8A-2-R	R&M E2000/APC FERRULE, 2 AXIS
E2000 PLUG* NEW	PH072-EF-2	E2000/PC plug type IPC holder for SFP-70D2, 2-axis
	PH072-EF8A-2	E2000/APC plug type IPC holder for SFP-70D2, 2-axis

Polishing Pads & Films Ordering Numbers



Polishing Pads for SFP-550/S/E

PG5X-480-00	GLASS PAD with rubber on one side and GA on the other side	3PCS/SET
PG5X-490-00	GLASS PAD with rubber on one side and GA on the other side	3PCS/SET
PG5X-500-00	GLASS PAD with rubber on one side and GA on the other side	3PCS/SET
PR5X-450-90	RUBBER PAD	3PCS/SET
PR5X-480-60	RUBBER PAD	3PCS/SET
PR5X-480-70	RUBBER PAD	3PCS/SET
PR5X-480-90	RUBBER PAD	3PCS/SET
PR5X-490-90	RUBBER PAD	3PCS/SET
PR5X-500-60	RUBBER PAD	3PCS/SET
PR5X-500-65	RUBBER PAD	3PCS/SET
PR5X-500-70	RUBBER PAD	3PCS/SET
PR5X-500-75	RUBBER PAD	3PCS/SET
PR5X-500-80	RUBBER PAD	3PCS/SET
PR5X-500-85	RUBBER PAD	3PCS/SET
PR5X-500-90	RUBBER PAD	3PCS/SET
PR5X-500-95	RUBBER PAD	3PCS/SET
PR5X-505-80	RUBBER PAD	3PCS/SET
PR5X-508-40	RUBBER PAD	3PCS/SET
PG5X-350-MT	GLASS PAD with GA on ONE sides	3PCS/SET
PG5X-450-MT	GLASS PAD with GA on ONE sides	3PCS/SET
PG5X-490-MT	GLASS PAD with GA on both sides	3PCS/SET
PG5X-490-MP	GLASS PAD with rubber on one side	3PCS/SET
PG5X-495-MP	GLASS PAD with rubber on one side	3PCS/SET
PG5X-500-MP	GLASS PAD with rubber on one side	3PCS/SET
PG5X-380-PL	GLASS PAD with GA on one side	3PCS/SET
PG5X-400-PL	GLASS PAD with GA on one side	3PCS/SET
PG5X-485-PL	GLASS PAD with GA on one side	3PCS/SET
PG5X-490-SR3	GLASS PAD with coated rubber one and silicon rubber other end	3PCS/SET (NEW)
PG5X-475-SR3	GLASS PAD with coated rubber one and silicon rubber other end	3PCS/SET
SR5D-10T	REPLACEMENT TACKY SHEET FOR PG5X-490-SR	3PCS/SET
PS5X-500-SR	SPONGE PAD	3PCS/SET
PS5X-500-00	SPONGE PAD	10PCS/SET

Polishing Pads for SFP-70D/D2

PG07-490-00	GLASS PAD with GA on both side	3PCS/SET
PG07-490-SR3	GLASS PAD with tacky sheet on one side and rubber on the other side	3PCS/SET (NEW)
PR07-480-80	RUBBER PAD	3PCS/SET
PR07-500-80	RUBBER PAD	3PCS/SET
PR07-508-40	RUBBER PAD	3PCS/SET
PR07-500-60	RUBBER PAD	3PCS/SET
PR07-500-70	RUBBER PAD	3PCS/SET
PR07-500-90	RUBBER PAD	3PCS/SET
PR07-505-80	RUBBER PAD	3PCS/SET

Polishing Films

DIAMOND FILM	DA5D-30U (20PCS/SET)	POLISHING FILM (20PCS/SET)
	DR5D-9U (20PCS/SET)	POLISHING FILM (20PCS/SET)
	DG5D-5U (20PCS/SET)	POLISHING FILM (20PCS/SET)
	DH5D-3U (20PCS/SET)	POLISHING FILM (20PCS/SET)
	DI5D-1.5U (20PCS/SET)	POLISHING FILM (20PCS/SET)
	DJ5D-1U (20PCS/SET)	POLISHING FILM (20PCS/SET)
DIAMOND FILM E-SERIES	EDA5D-30U	POLISHING FILM (20PCS/SET)
	EDR5D-9U	POLISHING FILM (20PCS/SET)
	EDG5D-5U	POLISHING FILM (20PCS/SET)
	EDH5D-3U	POLISHING FILM (20PCS/SET)
	EDI5D-1.5U	POLISHING FILM (20PCS/SET)
	EDJ5D-1U	POLISHING FILM (20PCS/SET)
SILICA FILM	XF5D (100PCS/SET)	POLISHING FILM (100PCS/SET)
OTHER FILM	GA5D (500PCS/SET)	POLISHING FILM (500PC/SET)
	GA5D-AD (25PCS/SET)	POLISHING FILM (25PC/SET)
	SF5D (500PCS/SET)	POLISHING FILM (500PCS/SET)
	AJ5D (500PCS/SET)	POLISHING FILM (500PCS/SET)
	AJ5D (100PCS/SET)	POLISHING FILM (100PCS/SET)
	AR5D (500PCS/SET)	POLISHING FILM (500PCS/SET)
	AR5D (50PCS/SET)	POLISHING FILM (50PCS/SET)
	DC5D (5PCS/SET)	POLISHING FILM (5PCS/SET)
	CF5D (20PCS/SET)	POLISHING FILM (20PCS/SET)
	EF5D (60PCS/SET)	POLISHING FILM (60PCS/SET)
MT POLISHING FILM	BR5D (100PCS/SET)	POLISHING FILM (100PCS/SET)
	GC5D (500PCS/SET)	POLISHING FILM (500PCS/SET)
	GC5D (50PCS/SET)	POLISHING FILM (50PCS/SET)
	GF5D (500PCS/SET)	POLISHING FILM (500PCS/SET)
	GF5D (50PCS/SET)	POLISHING FILM (50PCS/SET)
	GH5D (500PCS/SET)	POLISHING FILM (500PCS/SET)
	GH5D (50PCS/SET)	POLISHING FILM (50PCS/SET)
	GI5D (500PCS/SET)	POLISHING FILM (500PCS/SET)
	GI5D (50PCS/SET)	POLISHING FILM (50PCS/SET)
	BY5D (100PCS/SET)	POLISHING FILM (100PCS/SET)
	AO5D (500PCS/SET)	POLISHING FILM (500PCS/SET)
	FT5D-SC3	FLOCK FILM, SC, 3UM, NON-PSA (50PCS/SET)
	FT5D-SC3P	FLOCK FILM, SC, 3UM, PSA (50PCS/SET)
	LT5D-SC3	LAPPING FILM, SC, 3UM, NON-PSA (50PCS/SET)
	FM5D-AO1	FLOCK FILM, CE, 1UM, NON-PSA (50PCS/SET)
	FM5D-CE1	FLOCK FILM, CE, 1UM, NON-PSA (50PCS/SET)
	FM5D-SOAP2	SiO2 flock finishing film Ver.2 (50 sheets/set) (NEW)

Polishing Films for SFP-70D and SFP-70D2

FILM	GA07	200PCS/SET
	DR07-9U	20PCS/SET
	DH07-3U	20PCS/SET
	DI07-1.5U	20PCS/SET
	DJ07-1U	20PCS/SET
	SF07	200PCS/SET
	AR07	200PCS/SET
	AJ07-AD	200PCS/SET
	XF07	100PCS/SET
	CF07	20PCS/SET
SPACER	SP07-005	20PCS/SET
MT FILM	GC07	50PCS/SET
	AR07	50PCS/SET
	GH07	50PCS/SET
	FM07-SOAP2	50PCS/SET



[Click here](#)



[Click here](#)



[Click here](#)

