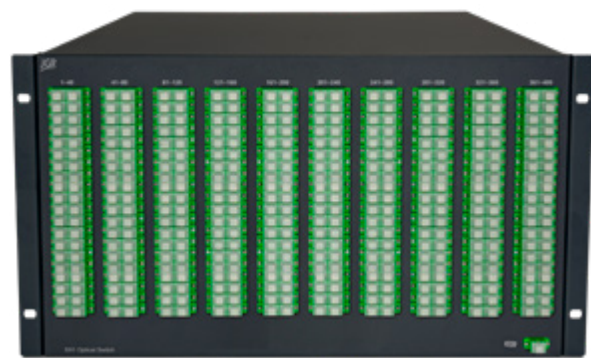




### Product Description

The SX1 Optical Switch is a customizable benchtop/rackmount instrument ideal for high-volume manufacturing production testing. Available in single-mode or multimode, the switch configurations range from 1x2 up to 1x400. Optional 2x1 or 4x1 built-in switches can provide additional common inputs. The switch may be controlled through remote interface (USB or Ethernet).

A variety of configuration options offers additional flexibility. The front panel bulkheads can be fitted with FC, SC or LC connector types. The 3U chassis can contain up to 185 bulkheads. Larger channel counts move to a 6U chassis.



### KEY FEATURES

- Low IL <0.7dB
- $\pm 0.005$ dB repeatability
- Up to 360 outputs
- Chassis modular
- Customization available

### APPLICATIONS

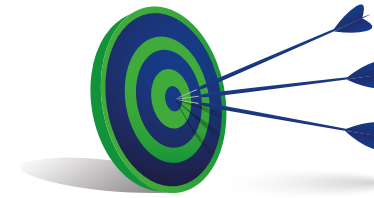
- High-volume production testing
- Multiple device testing
- Test automation
- Paired with RL1 for multi-fiber testing

### COMPLIANCE

- UL/CSA 61010
- IEC 61010
- FCC Part 15 (Class A)
- EN 61326 (Class A)

### IN THE BOX

- SX1 Switch
- AC power cord
- Test report



### Optimized for Performance

The SX1 is optimized for repeatability, BR & IL. With a repeatability of  $\pm 0.005$ dB, BR of <-60dB & IL <0.7dB, the SX1 is nearly invisible within your application.

### Benchtop or Rackmount

The SX1 is available in 3 form factors:

- 2U half rack benchtop up to 48ch, (rack ears available)
- 3U full rack up to 185ch
- 6U full rack up to 400ch

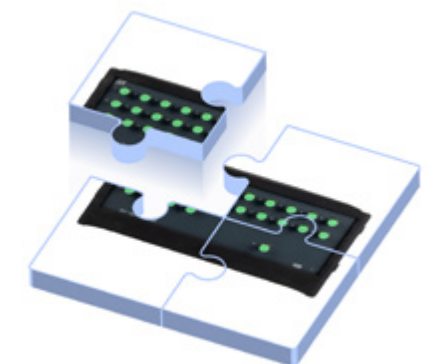


### Connect directly to RL1 Return Loss Meter

The RL1 can be connected directly to an additional SX1 switch for multi-fiber testing. The RL1 takes full control of the switch, automating measurements while storing all references and results. If desired, a second SX1 switch can be connected to measure insertion loss, return loss, and verify mapping of multi-fiber connectors or complex assemblies.

### Customizable

The SX1 switch can be customized to suit your needs at no additional cost. If you need multiple switches of different configurations within one chassis or a custom spliced schematic including couplers or various output connector types, talk to us and we'll make it happen!





Optical/Electrical Specifications

Parameter	Specification	
	Single-mode	Multimode
Wavelength Range (nm)	1250 - 1670	840 - 1350
Insertion Loss (dB) <sup>1</sup>	<0.7	
Backreflection (dB) <sup>1</sup>	≤ -60	≤ -40
PDL (dB)	0.05	N/A
Repeatability (dB) <sup>2</sup>	± 0.005	
Crosstalk (maximum) (dB)	-80	
Maximum Input Power (dBm)	23	
Switch Life	10 <sup>8</sup> cycles	
Switching Time (ms)	300	
Control	USB or Ethernet	
Input Voltage	100 - 240 V AC, 50 - 60 Hz	
Power Consumption (VA)	60 maximum	
Display	Optional 5" touch screen	

Notes:  
<sup>1</sup> Excluding connectors.  
<sup>2</sup> Sequential switching. Add ±0.02 for random

Mechanical/Environmental Specifications

Parameter	Specification					
	2U half rack		3U full rack		6U full rack	
Max Output Count	FC	SC	FC	SC	FC	SC
Without Touchscreen (Front panel output)	1x48		1x144	1x135	1x400	
With 5" Touchscreen (Front or rear panel output)	1x12	1x24	1x96	1x95	1x360	
Unit Dimensions W x H x D (cm)	23.5 x 12 x 32.5		44.5 x 13.5 x 50		44.5 x 26.6 x 38	
Shipping Box Dimensions W x H x D (cm)	36.5 x 39 x 53		53 x 32 x 57		53 x 45 x 57	
Unit Weight (kg)	8		14		18	
Total Shipment Weight (kg)	9		15		20	
Operating Temperature (°C)	0 to 55					
Storage Temperature (°C)	-40 to 70					
Humidity (Non-condensing)	Maximum 95% RH from 0 to 40°C					

