

# KONCENTRIK-V2



## KONCENTRIK-V2

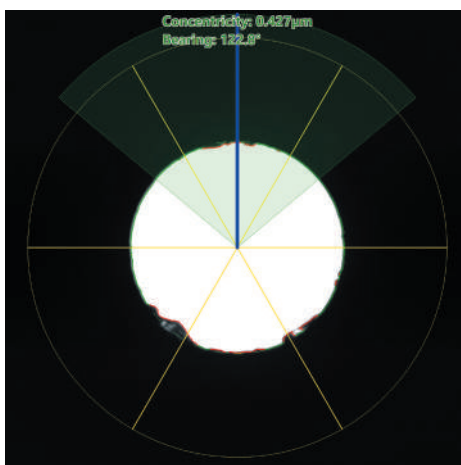
*High precision Concentricity measurements of bare ferrules and patch-cords*

Koncentrik-V2 is a modular measurement system. **Fiber or Ferrule eccentricity measurements** can be performed using different mechanical modules.

Koncentrik-V2 with connector module is dedicated to eccentricity measurement of **fiber core relative to ferrule envelope**. The unit is able to measure the concentricity and indicates the angular value of maximum eccentricity.

Koncentrik-V2 with ferrule module is dedicated to concentricity measurement of **ferrule bore to ferrule envelope**. The software indicates the maximum eccentricity angle when rotating the ferrule.

With the Blink software platform, Koncentrik-V2 is an **easy to use measurement unit which allows to tune connectors already assembled, tune ferrules before glueing the fiber or to sort ferrules by grade.**



### KEY FEATURES :

- Ferrule end-face visual inspection at x 400 magnification
- Accurate and repeatable measurements
- User adjustable quality level for high-speed measurements
- Easy calibration Blink Concentricity software
- Eccentricity measurement : reproducibility +/-0.05µm ; Range : 0 to 100µm
- Measurement data exported in standard CSV format
- Statistics on measurements available
- Measurement report in HTML format
- Compatible with desktop PC, laptop, tablet PC

### FOR CONNECTORS :

- Measures diam. 2.50 mm and 1.25 mm PC type connectors and others
- APC connector measurements possible with a dedicated Koncentrik-V2 version

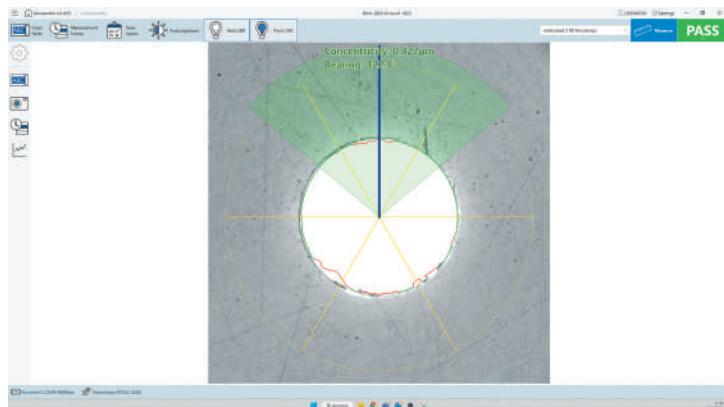
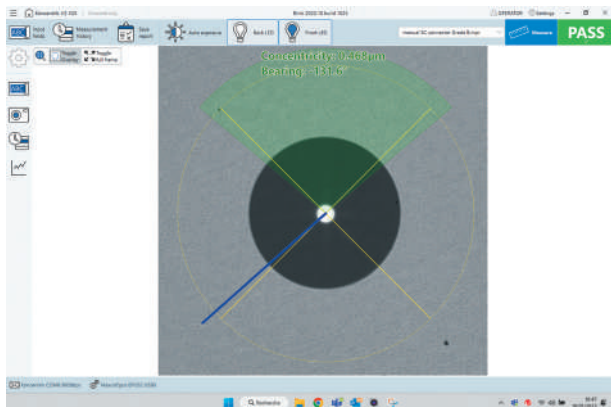
### FOR FERRULES :

- Measures ceramic and metal PC-type ferrules
- Ferrule envelope on bare ferrule & bore shape-error measurement
- Automatic measurement + re-positioning of ferrule at tuned position

**SPECIFICATIONS :**

Eccentricity (µm) :	0 to 100
Indexing measurement (degrees) :	0 to 360
Connector measurement speed (sec.) :	10 (depends on user)
Ferrule outside diameter (mm) :	1.00 to 3.17
Ferrule measurement speed (sec.) :	3 (depends on user)

Fiber core diameter (µm) :	5 to 400
Power source :	12V
Dimensions H x W x L (mm) :	120 x 150 x 260
Weight (kg) :	3.9
Magnification :	X 400



**Concentricity report** Generated by Blink Data-Pixel

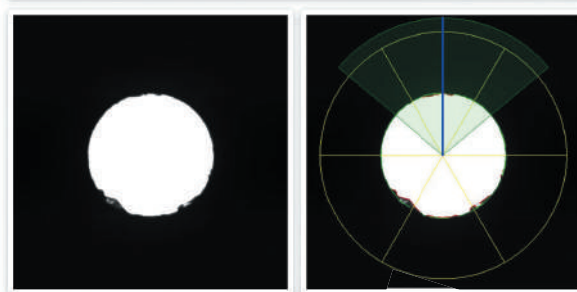
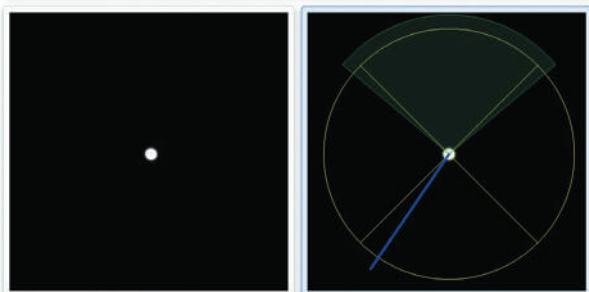
Date	2023-01-18 12:05	Sample name	SCPC	<b>PASS</b>
Measurement device	Koncentrik-V2	Serial number	2023-01-18570	
Device s/n	4002875781-25	Operator	John	
Type	fiber	Station s/n	4002875781-25	
Profile	manual SC connector Grade B mprr			

Parameter	min allowed	max allowed	Measurement result	Pass/Fail
Concentricity	0 µm	2.4 µm	0.37 µm	PASS
Inner diameter	5 µm	15 µm	11.56 µm	PASS
Oval error	0 µm	0.2 µm	0.14 µm	IGNORED
Triangularity error	0 µm	0.2 µm	0.21 µm	IGNORED
Bearing error	-50 °	50 °	-145.67 °	PASS
Cleaness	90 %	n/a	PASS %	IGNORED

**Concentricity report** Generated by Blink Data-Pixel

Date	2023-01-18 17:13	Sample name	Ferrule 125µm	<b>PASS</b>
Measurement device	Koncentrik-V2	Serial number	2023-01-18572	
Device s/n	4002875781-25	Operator	John	
Type	ferrule	Station s/n	4002875781-25	
Profile	motorized 2.50 ferrule mprr			
Ferrule diameter	2.3mm			

Parameter	min allowed	max allowed	Measurement result	Pass/Fail
Concentricity	0 µm	2.4 µm	0.41 µm	PASS
Inner diameter	120 µm	130 µm	126.53 µm	PASS
Oval error	0 µm	0.2 µm	0.05 µm	PASS
Triangularity error	0 µm	0.2 µm	0.03 µm	PASS
Bearing error	-50 °	50 °	122.78 °	PASS
Cleaness	90 %	n/a	97.32 %	IGNORED



**ORDER OPTIONS :**

Koncentrik V2 unit with Blink Concentricity :	70-KKFE-V2-M10-00
Holder for Bare ferrule 1.25mm	30-HL-000728
Holder for Bare ferrule 1.60mm	30-HL-001024
Holder for Bare ferrule 2.00mm	30-HL-001740
Holder for Bare ferrule 2.50mm	30-HL-000729
Holder for patchcord 1.25mm, VGroove-type	30-HL-000724
Holder for patchcord 1.60mm, VGroove-type	30-HL-000727
Holder for patchcord 2.00mm, VGroove-type	30-HL-000726
Holder for patchcord 2.50 mm, VGroove-type	30-HL-000723
Holder for patchcord 3.17mm (SMA), VGroove -type	30-HL-000725